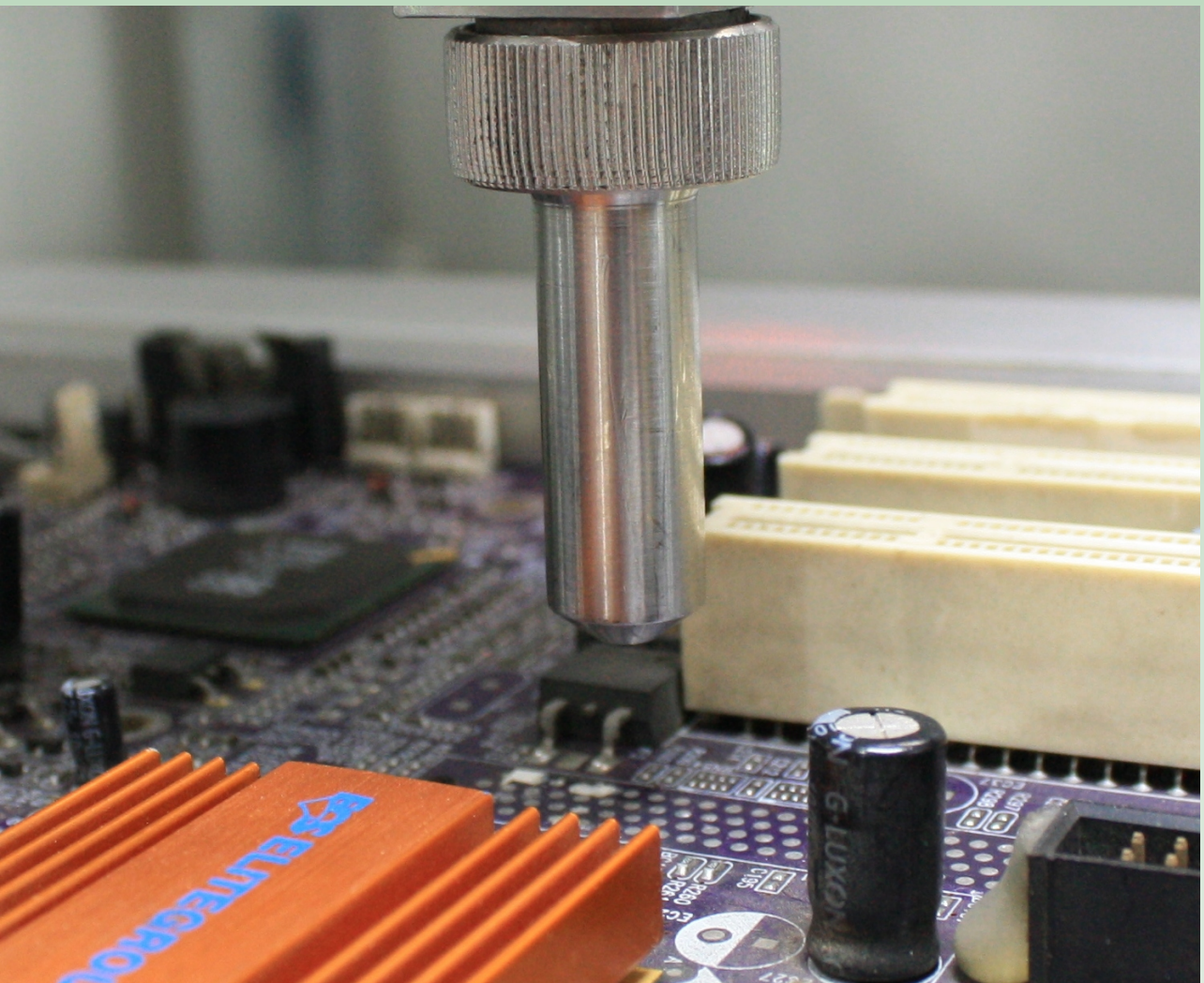




**Kinco**  
Automation

**KWA-511-CD**

# Conformal Coating Dispenser

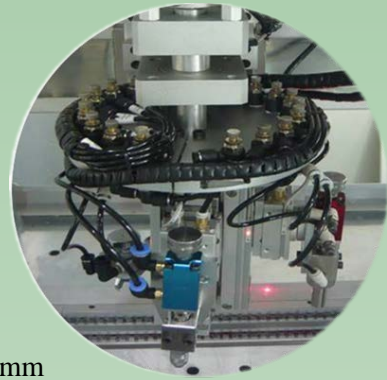


[www.kinco.com.cn](http://www.kinco.com.cn)

4008-860-680

# Features 特点

- Windows XP Operating System 视窗操作系统
- User Friendly Interface 人性化操作界面
- Gerber Files Input Gerber文件导入
- CCD Camera Teaching Mode 镜头教导编程
- Vision System For Positioning 视觉系统定位
- Precise Servo Driving Structure 精准伺服电机驱动结构
- Automatic Switching Spray Valves 自动旋转更换喷涂阀
- High Precision Spray Width 1.5~30mm 高精度喷涂宽度 1.5~30mm
- Capable For Conformal Coating, Solder Mask Coating, Underfill & etc... 可应用于三防漆, 阻焊膜, 底部填充等等之工艺



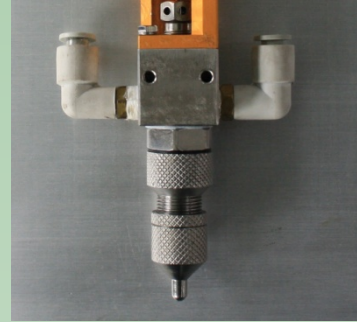
# Specifications 规格

Item	Parameters	Item	Parameters
Process Area 最大工作面积	400mm*350mm	Power Supply 电压要求	AC220V, 50Hz, 2.5Kw
Transfer Speed 移动速度	300 mm/s	Machine Communication 设备通讯	Standard SMEMA
Positioning Accuracy 精准度	±0.02 mm	Compressed Air 压缩气要求	4-6 Kg/cm <sup>2</sup>
Repeatability 重复精度	±0.015 mm	Width Adjustment 宽度调整	Motor Drive 电机驱动
Rotation Angle 旋转角度	290°	Pump Valves & Nozzles 泵阀及喷嘴	Max 3 sets
Rotation Accuracy 旋转精度	±0.1°	Material Capacity 涂料容量	20L
Operation Style 操作方式	Keyboard + Mouse + Push Buttons 键盘+滑鼠+按钮	Transmission 传动	Servo Motor + Precision Ball Screw 伺服电机+精密滚珠
Dimensions 机体尺寸	1550*1100*1700mm (W x D x H)	Machine Weight 重量	600KG

# Valves & Nozzles 胶阀与喷嘴

## CD-CV01 Cone-Shaped

- Cone-Shaped spray nozzle adopts pneumatic technology which control coating quality accurately
- Critical nozzle designed for spray width of 3~10mm with no splash
- Solvent based coatings thickness can reach 20~200 $\mu$ m
- Suitable for coating materials such as : Acrylic Acid Type, Silicon Type, Epoxy, UV Glue & etc.....
- 锥形喷雾阀采用气动技术准确控制喷涂质量
- 特殊喷嘴设计促使喷涂宽度在于 3~10mm 同时不形成飞溅情况
- 溶剂型涂料喷涂厚度可达 20~200 $\mu$ m
- 适合多种涂料使用, 如 丙烯酸类, 硅类, 环氧类, UV 胶等...



## CD-FV02 Fan-Shaped

- Fan-Shaped spray nozzle based on Cone-Shaped nozzle which modify to achieve wide area coating applications
- Nozzle designed for spray width of 15~30mm
- Solvent based coatings thickness can reach 20~200 $\mu$ m
- Adjustable molecular size for different requirement
- Suitable for coating materials such as : Acrylic Acid Type, Silicon Type, Epoxy, UV Glue & etc.....
- 扇形喷雾阀基础于锥形喷雾阀原理, 适合大面积喷涂应用
- 喷嘴设计促使喷涂宽度在于 15~30mm
- 溶剂型涂料喷涂厚度可达 20~200 $\mu$ m
- 任意调节雾化微粒以适合不同之应用需求
- 适合多种涂料使用, 如 丙烯酸类, 硅类, 环氧类, UV 胶等...



## CD-FV03 Pin-Type

- Pin-Type nozzle also based on Cone-Shaped nozzle technology and dedicated for narrow space applications
- Pin nozzle designed for spray width of 1~3mm
- Outlet diameter in 0.2~2mm
- Minimum Linear application width in 1mm
- Suitable for coating materials such as : Acrylic Acid Type, Silicon Type, Epoxy, UV Glue, Under-fill & etc.....
- 针形喷雾阀同样基础于锥形喷雾阀原理, 特定适合狭窄空间应用
- 针嘴设计促使喷涂宽度在于 1~3mm
- 出胶针嘴直径 0.2~2mm
- 最小线性喷涂宽度为 1mm
- 适合多种涂料使用, 如 丙烯酸类, 硅类, 环氧类, UV 胶及底部填充等...



## CD-JV04 Jet Type

- Jet nozzle adopts precision flow control technology which dedicated for microscale applications
- Jet speed up to 25~30K/h
- Precise flow control for quantity of micro injection
- Capable for high speed applications
- Suitable for coating materials such as : Acrylic Acid Type, Silicon Type, Epoxy, UV Glue & etc.....
- 喷射阀利用精确流量控制技术, 特别适合微量喷射应用
- 喷射速度可达至 25~30K/h
- 高精度流量控制, 实现准确微量喷射
- 可符合高速作业条件
- 适合多种涂料使用, 如 丙烯酸类, 硅类, 环氧类, UV 胶等...





# Kince

Automation

## **Kince Worldwide Co., Ltd.**

### **建时(香港)有限公司**

Address: Rm706, Block H, 7/F, Phase II, Kwai Shing Industrial Building, 42-46 Dai Lin Pai Road, Kwai Chung, Hong Kong

地址: 香港葵涌大連排道42-46号, 貴盛工业大厦第二期七字樓H座706室

Tel: (852)2688 2337 (8 lines)

Fax: (852)2688 2335

Email: sales@kince.com.cn

## **Kince Automation Co., Ltd.**

### **东莞市健时自动化设备有限公司**

Address: No.6, Kince Industrial Building, Shan Quan Road, Yong Tou Management District, Chang An Town, Dongguan, Guangdong, China.

地址: 东莞市长安镇涌头管理区山泉路5号健时大厦

Tel: (86-769)8532 3016 (33 lines)

Fax: (86-769)8532 3019

Email: sales\_d1@kince.com.cn

## **SuZhou Branch Office.**

### **苏州办事处**

Address: 1/F, No.5 Block, Yi Zhi Yuan, 813 Bing He Road, High & New District, SuZhou, Jiang Su Province.

地址: 江苏省苏州市高新区滨河路813号溢智园五号楼一楼

Tel: (86-512)6808 1996/6808 1995

Fax: (86-512)6808 2470

## **Tianjin Branch Office.**

### **天津办事处**

Address: Rm710, Wu Kuang Building, 47 Xiang Jiang Road, He Xi District, Tianjin.

地址: 天津市河西区湘江道47号五矿大厦710室

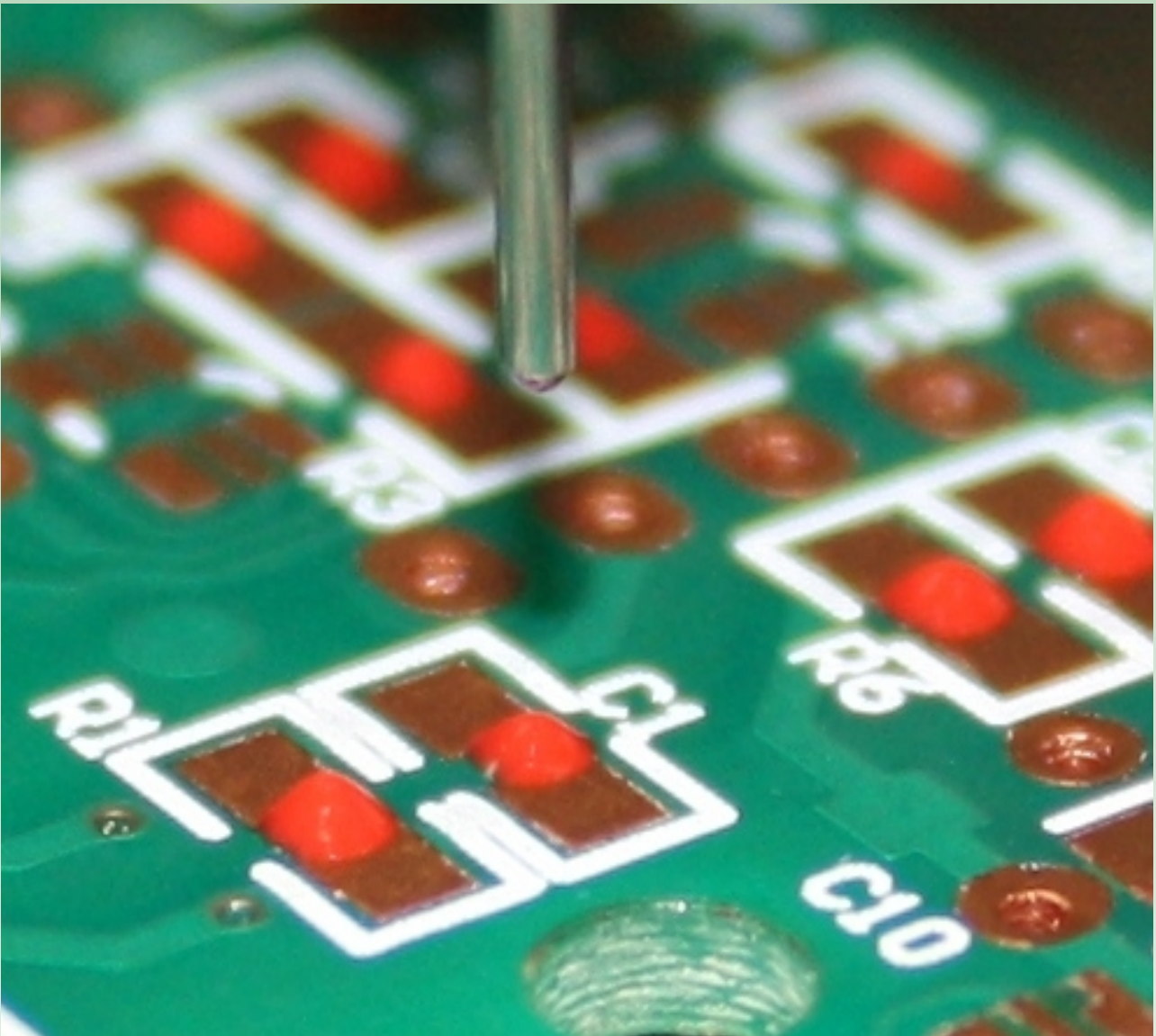
Tel: (86-22)2827 9475



**Kinco**  
Automation

**KWA-511-AD**

**High Speed Dispenser**



[www.kinco.com.cn](http://www.kinco.com.cn)

4008-860-680

# Features 特点

- Windows XP Operating System 视窗操作系统
- User Friendly Interface 人性化操作界面
- Gerber Files Input Gerber文件导入
- CCD Camera Teaching Mode 镜头教导编程
- Image Captured For Multiple Substrates Positioning 影像摄取进行多模块定位
- Vision System For Positioning 视觉系统定位
- Precise Servo Driving Structure 精准伺服电机驱动结构
- High Speed Operation In Approx 18,000 dots/hr 高速运作约18,000点/小时
- Transfer speed can up to 500mm/sec 移动速度可高达500mm/秒
- Capable For Chip Bonder Dispensing, Solder Paste Dispensing, Encapsulation, Under-fill & etc... 可应用于贴片红胶, 焊锡膏, 封装, 底部填充等等之工艺



# Specifications 规格

Item	Parameters	Item	Parameters
Process Area 最大工作面积	L400mm*W350mm	Power Supply 电压要求	AC220V, 50Hz, 2.0Kw
Transfer Speed 移动速度	500 mm/s	Machine Communication 设备通讯	Standard SMEMA
Positioning Accuracy 精准度	±0.02 mm	Compressed Air 压缩空气要求	4-6 Kg/cm2
Repeatability 重复精度	±0.015 mm	Width Adjustment 宽度调整	Motor Drive 50-350mm 电机驱动
Dispensing Speed 点胶角度	Approx 18,000 dots/hr	Dispensing Valves & Nozzles 胶阀及喷嘴	Max 2 sets
Height Measurement 高度测量	Laser 雷射测高	Programming 编程	Gerber Input / Vision Teaching 数据导入/视觉教导
Material Heating System 物料加热	Water Bath 暖水装置	Conveyor Speed 传送速度	300mm/sec
Operation Style 操作方式	Keyboard + Mouse + Push Buttons 键盘+滑鼠+按钮	Transmission 传动	Servo Motor + Precision Ball Screw 伺服电机+精准螺杆
Dimensions 机体尺寸	1400*1100*1700mm (W x D x H)	Machine Weight 重量	600KG

# Valves 胶阀

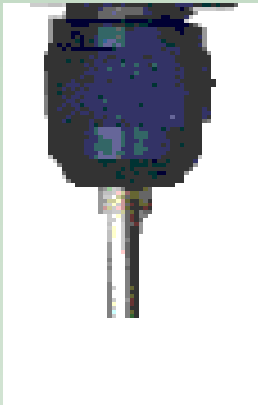
## AD-AV01 Auger Type Valve

- Auger type valve & nozzle adopts mechanical technology which achieve steady material supply and automatic suck back features
- Excellent for high speed consistent dispensing
- Definitely fulfill Encapsulation, Glob Top, Plotting & Under-fill applications
- Dispensing pitch can reach 1.2mm
- Minimum linear width in 1mm
- Minimum dot size in 0.5mm
- Suitable for materials such as : Chip Bonder, Silicon, Epoxy, UV Glue, Silver Epoxy & etc.....
- 螺杆阀采用机械技术准确实现稳定之出胶量及自动回吸功能
- 特别优越于高速连贯性点胶工艺
- 绝对满足封装，水珠顶部封装，填充及底部填充的工艺要求
- 点胶间距能达至1.2mm
- 最小线性宽度为1mm
- 最小胶点直径为0.5mm
- 适合多种物料使用，如红胶，硅类，环氧类，UV胶及银胶等...



## AD-PV02 Plunger Type Valve

- Plunger type valve & nozzle adopts pneumatic technology which suitable for low criteria dispensing applications
- Capable for moderate speed consistent dispensing
- Dispensing pitch can reach 1.2mm
- Minimum linear width in 1mm
- Minimum dot size in 0.5mm
- Suitable for materials such as : Chip Bonder, Silicon, Epoxy, UV Glue, Silver Epoxy & etc.....
- 柱塞阀采用气动技术设计，适合较低要求之点胶工艺
- 能满足中等速度之连贯性点胶作业
- 点胶间距能达至1.2mm
- 最小线性宽度为1mm
- 最小胶点直径为0.5mm
- 适合多种物料使用，如红胶，硅类，环氧类，UV胶及银胶等...



## AD-JV04 Jet Type Valve

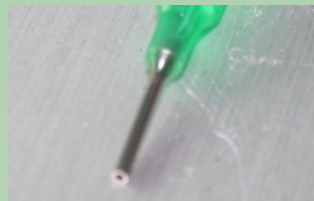
- Jet type valve adopts precision flow control technology which dedicated for microscale & high speed applications
- Jet speed up to 25~30K/h
- Precise flow control for quantity of micro injection
- Injection space can minimize to 180μm
- Minimum linear width in 250μm
- Microscale dot size in 200μm
- Suitable for materials such as : Chip Bonder, Silicon , Epoxy, UV Glue, Silver Epoxy & etc.....
- 喷射阀利用精确流量控制技术，特别适合微量喷射及高速应用
- 喷射速度可达至25~30K/h
- 高精度流量控制，实现准确微量喷射
- 喷射间距可低至180μm
- 最小线性宽度为250μm
- 微量胶点直径低至200μm
- 适合多种涂料使用，如红胶，硅类，环氧类，UV胶，银胶等...



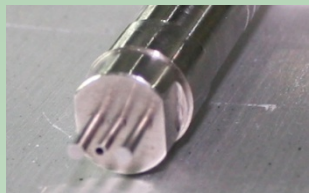
## Nozzles 喷嘴

### AD-CN01 Consumable Type Nozzles

- Consumable type nozzles is commonly used for low end or low criteria dispensing applications.
- Outlet diameter in  $\phi$  0.3/0.4/0.5/0.6/0.8/1.0mm
- 易耗型喷嘴普遍应用于低端或低要求之点胶工艺
- 出口直径有  $\phi$  0.3/0.4/0.5/0.6/0.8/1.0mm



### AD-MISN02 Metal Type Nozzles



- Metal type single nozzle with stopper is specially designed for high speed & critical dispensing applications.
- Outlet diameter in  $\phi$  0.3/0.4/0.5/0.6/0.8/1.0mm
- 金属型单孔带限位喷嘴特别设计应用于高速及高要求之点胶工艺
- 出口直径有  $\phi$  0.3/0.4/0.5/0.6/0.8/1.0mm

### AD-MIDN03 Metal Type Nozzles

- Metal type Dual nozzle with stopper is specially designed for high speed & critical dispensing applications.
- Outlet diameter in  $\phi$  0.3/0.4/0.5/0.6/0.8/1.0mm
- 金属型双孔带限位喷嘴特别设计应用于高速及高要求之点胶工艺
- 出口直径有  $\phi$  0.3/0.4/0.5/0.6/0.8/1.0mm

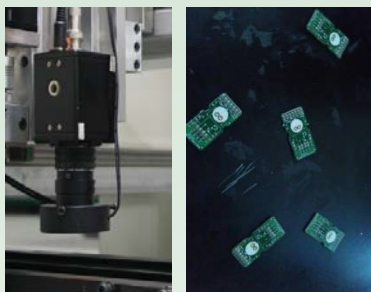


## Height Measurement 高度测量系统



- High precision height measurement laser unit, effectively feedback the displacement between substrate and nozzle to control system.
- Measuring area in  $\pm 4.0$ mm
- Skip individual substrate automatically whenever bending occurs
- Resolution of  $0.5\mu\text{m}$
- 高精度激光测高系统，有效地反馈喷嘴与板材之间距离予控制系统
- 测量面积为 $\pm 4.0$ mm
- 自动识别跳过弯曲板块
- 精准度达至 $0.5\mu\text{m}$

## Image Captured & Vision Positioning 影像摄取及定位



- Vision camera adopts fiducial marks identification for board positioning.
- Next set of camera handles image capture feature for irregular positioning of multiple boards, no fixture required.
- Resolution up to 5.0 mega pixels.
- 视觉相机实现定位点识别功能，进行精准定位
- 额外视觉相机进行不规则多片板材摆放位置摄取，进行定位，无须夹具
- 解像度达至500万象数